



GENERAL DESCRIPTION

Esha Road-Lift is rapid setting modified bituminous emulsion, designed for sealing capillary cracks that appear on old asphalt pavements, while stabilizing loose aggregates, restoring asphalt pavement to its prior condition. As a result extend life cycle and service life of asphalt pavement, is achieved.



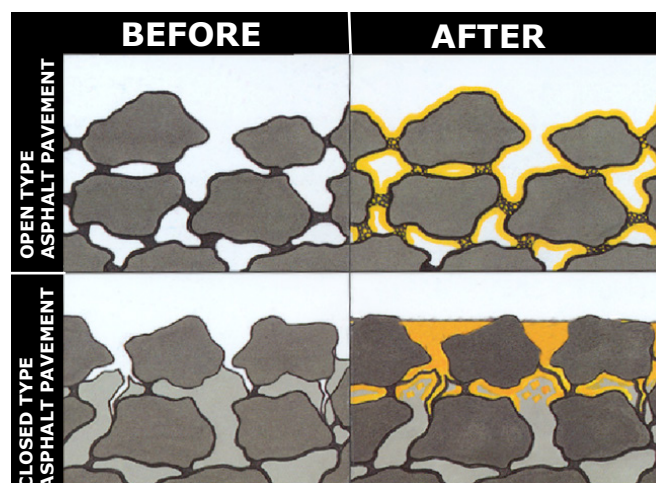
APPLICATION

Esha Road-Lift applied to dense-graded, as well as to open graded asphalt pavements by spraying. In small areas it can be applied by suitable brush or porous roll. **Esha Road-Lift** is recommended to be slightly stirred before application.

Before application asphalt pavement should be thoroughly cleaned. All dust, loose matter and remaining oils should be removed in order to be smooth and dry. Potholes and other damages of asphalt pavement should be repaired with cold applied asphalt mix **ESHAFILL**.

Consumption of **Esha Road-Lift** should be uniform at about 250-500gr/m² depending on the pots and the texture of the asphalt pavement. The application temperature must be higher than 10°C and with the absence of rain forecast.

Final hardness of **Esha Road-Lift** is achieved in about 1h after application. Ready surface should have lively black color, without sticky texture, footprints and visible liquid material in the gaps between the surface coarse aggregates. This application method should be repeated in rare times after visual check of asphalt pavement, in order to maximize its residual life expectancy, thus contributing to the project economy.





TECHNICAL CHARACTERISTICS

CHARACTERISTICS	METHOD	VALUE
Color	Observation	Brown
Appearance	Observation	Slightly thixotropic
Dry film	Observation	Elastomeric
% Residue	EN 1428	40-45 %
Softening Point of Residue	EN 1427	> 80 °C
Penetration of Residue	EN 1426	< 50 dmm
Particles polarity	EN 1430	Anionic (pH 8,5-9)
Drying time (under cloudy conditions)	Observation	≤ 60 min

STORAGE

Esha Road-Lift can be storage in dry and protected enviroment at a temperature from +5 °C to 35 °C

PACKING

Esha Road-Lift can be delivered in:

- Plastic pails of 18 Kg and
- Drums of 200 Kg

PRECAUTIONS

May cause damage to organs through prolonged or repeated exposure. Keep out of reach of children. Do not breathe dust/fume/gas/mist/vapours/spray. Get medical advice/attention if you feel unwell. Dispose of contents/container in accordance with local/regional/national/international regulations.

BEFORE

AFTER



Tolerances in the nominal values are in accordance with respective standards. Producer reserves the right to modify the properties of his products.

The information contained in this leaflet is, to the best of our knowledge, true and reliable and is supported by the present state of our knowledge. According to the care taken and the method of application, upon which we have no influence, the values are subject to divergence. Therefore for best results, prior to use, an application test should be made by the user under his own processing conditions.

Alfa-Alfa Energy S.A.
 ATHENS/CENTRAL OFFICES-FACTORY: Aspropyrgos Beach, 193 00 Aspropyrgos, Attica
 T +30 2105518700, F +30 2105572974 | THESSALONIKI/OFFICES-WAREHOUSE: 18 Epirou
 Street, 570 09 Kalochoi, T +30 2310783725, F +30 2310783326 |
www.eshagr.com • sales@eshagr.com



EN ISO 9001:2015 EN ISO 14001:2015